

# CATALOGO PRENSAESTOPAS ATEX



## ÍNDICE DE CONTENIDOS

---

|                                 | Página    |
|---------------------------------|-----------|
| <b>PRENSAEASTOPAS LATÓN</b>     |           |
| <b>INFORMACIÓN .....</b>        | <b>2</b>  |
| <b>PRENSAESTOPAS</b>            |           |
| <b>SERIE DN .....</b>           | <b>3</b>  |
| <b>SERIE DNC .....</b>          | <b>4</b>  |
| <b>SERIE DAS .....</b>          | <b>5</b>  |
| <b>SERIE DAD .....</b>          | <b>6</b>  |
| <b>SERIE DALD .....</b>         | <b>7</b>  |
| <b>SERIE DNR .....</b>          | <b>8</b>  |
| <b>SERIE DNCR .....</b>         | <b>9</b>  |
| <b>SERIE DASR .....</b>         | <b>10</b> |
| <b>SERIE DADR .....</b>         | <b>11</b> |
| <b>ACCESORIOS</b>               |           |
| <b>TAPONES .....</b>            | <b>12</b> |
| <b>REDUCCIONES .....</b>        | <b>13</b> |
| <b>ADAPTADORES .....</b>        | <b>14</b> |
| <b>OTROS ACCESORIOS .....</b>   | <b>15</b> |
| <b>PRENSAEASTOPAS POLIAMIDA</b> |           |
| <b>SERIE UNI .....</b>          | <b>16</b> |

## CERTIFICACIONES

Cada producto ha sido diseñado y fabricado según las Normas Europeas **IEC/CENELEC** y las recomendaciones EN, con la aprobación **ATEX/IEC** por parte de un organismo autorizado.

Garantía de calidad de producto n. **CEC 0.5/2045-AET120** expedido por **CEC** (Consortio Europeo de Certificaciones).

Todos los productos son fabricados para instalarse en las siguientes zonas:

- Áreas seguras: W.P. IP66 ejecución industrial
- Áreas de clase 1 div.1: Protección tipo Exd IIB / IIC

Certificado No. **CEC 05/2045-AET120** publicado por **CEC RWTUV-ITALY** para instalación tipo II2GD y grado de protección IP66 de acuerdo con las normas **CENELEC**:

- EN 50014 : 1998 + A1-A2
- EN 50018 : 2000 + A1
- EN 50019 : 2000
- EN 50281-1-1 : 1998 + A1

Certificado No. **CEC 09 ATEX 023X** publicado por **CEC RWTUV-ITALY** instalación tipo **II2GD** y grado de protección IP66 de acuerdo con las normas IEC:

- IEC EN 60079-0 : 2004
- IEC EN 60079-1 : 2007
- IEC EN 60079-7 : 2006
- IEC EN 61241-1 : 2004

## MATERIALES

### Partes metálicas

- Latón CW614N
- Acero inoxidable AISI 304/316
- Bronce (**bajo demanda**)

**Protección anticorrosión del latón:** recubrimiento de níquel/cromo

**Sellado:** EPDM (Caucho de etileno propileno dieno): buena resistencia a la abrasión y al desgaste, dureza Shore de 60±5, válido para temperaturas entre -40oC y +80oC. Silicona (bajo demanda)

## ROSCA

- UNI6125 GK (ISO 7/1 Rc)
- NPT (ANSI B1 20.1)
- ISO Mx1.5 (ISO 261)

Bajo demanda: BSPP/UNI338 (ISO 7/1 Rp) ó Pg (DIN 40430)

## NOTAS

Los prensaestopas para cable armado se suministran para ejecución normal, rango entre 0.3 y 0.9 mm de trenzado/armadura. Bajo demanda, se pueden suministrar prensaestopas para cable armado de 1-2.5 mm.

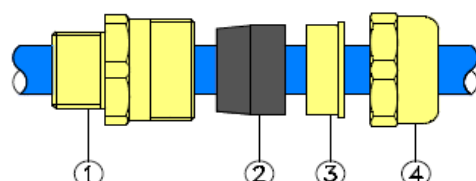
| GRUPO | NPT ANSI B1 20.1 | L  | ISO Mx1.5 ISO 261 | L  | Pg DIN 40430   | 6  |
|-------|------------------|----|-------------------|----|----------------|----|
| 0     | 3/8"             | 15 | M16               | 15 | Pg9<br>Pg11    | 12 |
| 1     | 1/2"             | 18 | M20               | 15 | Pg13.5<br>Pg16 | 12 |
| 2     | 3/4"             | 18 | M25               | 15 | Pg16<br>Pg21   | 12 |
| 3     | 1"               | 22 | M32               | 15 | Pg21<br>Pg29   | 12 |
| 4     | 1"1/4            | 22 | M40               | 15 | Pg29           | 14 |
| 5     | 1"1/2            | 22 | M50               | 15 | Pg36           | 14 |
| 6     | 2"               | 22 | M63               | 15 | Pg42<br>Pg48   | 14 |
| 7     | 2"1/2            | 27 | M75               | 15 | Pg48           | 14 |
| 8     | 3"               | 27 | M75/85            | 15 |                |    |

SERIE DN

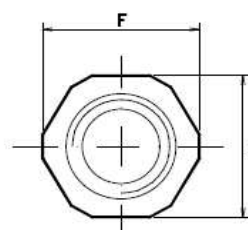
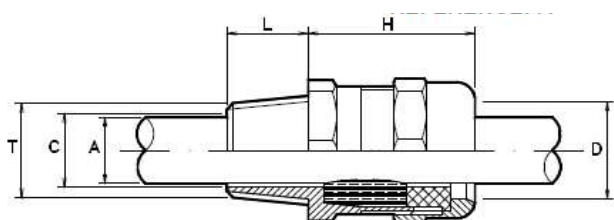
 II 2 GD EEx e/d IIC IP66

**APLICACIÓN**

- Cable no armado
- Sellado externo.
- Uso general en exteriores e interiores.



- 1- CUERPO  
2- SELLADO  
3- ANILLO PRENSANTE  
4- TUERCA



Designación : **DN1.10 M20x1.5**

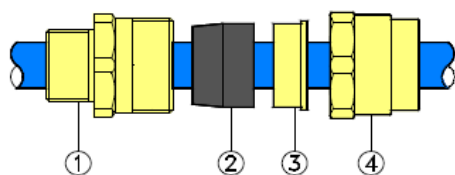
| ROSCA |  | DIMENSIONES CABLE (mm) |      |      | DIMENSIONES PRENSAESTOPAS (mm) |    |    |    |    |
|-------|--|------------------------|------|------|--------------------------------|----|----|----|----|
| Grupo | T  | REF.                   | A    |      | C                              | D  | H  | E  | F  |
|       |  |                        | MIN  | MAX  |                                |    |    |    |    |
| 0     | 3/8"NPT-M16x1.5-Pg9/11<br>1/2"NPT-M20x1.5-Pg13.5 | DN0.7                  | 4    | 7    | 11                             | 16 | 33 | 24 | 26 |
|       |  | DN0.10                 | 7    | 10   |                                |    |    |    |    |
| 1     | 1/2"NPT-M20x1.5-Pg13.5<br>3/4"NPT-M25x1.5-Pg16   | DN1.8                  | 5.5  | 8    | 14                             | 20 | 41 | 32 | 35 |
|       |  | DN1.10                 | 8    | 10.5 |                                |    |    |    |    |
|       |  | DN1.13                 | 10.5 | 13   |                                |    |    |    |    |
| 2     | 3/4"NPT-M25x1.5-Pg16                             | DN2.13                 | 10.5 | 13   | 19                             | 25 | 41 | 36 | 39 |
|       |  | DN2.15                 | 13   | 15.5 |                                |    |    |    |    |
|       |  | DN2.18                 | 15.5 | 18   |                                |    |    |    |    |
| 3     | 1"NPT-M32x1.5-Pg21                               | DN3.18                 | 15   | 18   | 25                             | 32 | 52 | 45 | 49 |
|       |  | DN3.21                 | 18   | 21   |                                |    |    |    |    |
|       |  | DN3.24                 | 21   | 24   |                                |    |    |    |    |
| 4     | 1"1/4NPT-M40x1.5-Pg29                            | DN4.24                 | 21   | 24   | 31                             | 38 | 53 | 50 | 55 |
|       |  | DN4.27                 | 24   | 27   |                                |    |    |    |    |
|       |  | DN4.30                 | 27   | 30   |                                |    |    |    |    |
| 5     | 1"1/2-M50x1.5-Pg36                               | DN5.27                 | 24   | 27   | 37                             | 44 | 53 | 57 | 62 |
|       |  | DN5.30                 | 27   | 30   |                                |    |    |    |    |
|       |  | DN5.33                 | 30   | 33   |                                |    |    |    |    |
|       |  | DN5.36                 | 33   | 36   |                                |    |    |    |    |
| 6     | 2"NPT-M63x1.5-Pg42                               | DN6.39                 | 36   | 39   | 47                             | 54 | 53 | 67 | 73 |
|       |  | DN6.42                 | 39   | 42   |                                |    |    |    |    |
|       |  | DN6.45                 | 42   | 45   |                                |    |    |    |    |
| 7     | 2"1/2NPT-M75x1.5-Pg48                            | DN7.48                 | 45   | 48   | 57                             | 65 | 53 | 80 | 88 |
|       |  | DN7.51                 | 48   | 51   |                                |    |    |    |    |
|       |  | DN7.54                 | 51   | 54   |                                |    |    |    |    |
|       |  |                        |      |      |                                |    |    |    |    |

SERIE DNC

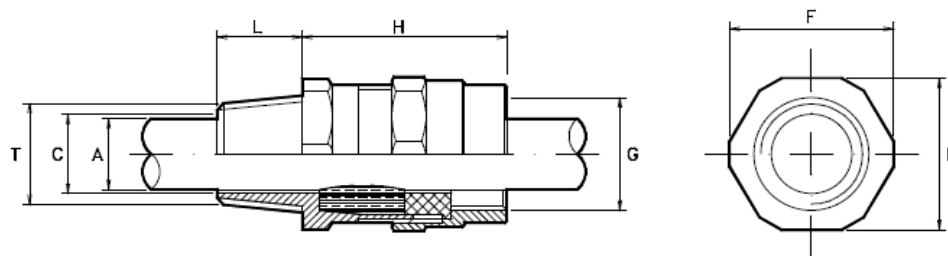
II 2 GD EEx e/d IIC IP66

**APLICACIÓN**

- **Cable no armado**
- Sellado externo.
- Válido para acoplar a tubo flexible
- Uso general en exteriores e interiores.
- **Nota:** Rosca G=ISO 7/1 RP-BSP. Otras roscas bajo demanda.



- 1- CUERPO
- 2- SELLADO
- 3- ANILLO PRENSANTE
- 4- TUERCA



Designación : **DNC1.10 M20x1.5**

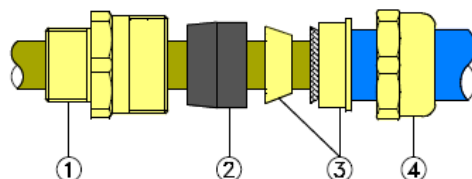
| Grupo | ROSCA<br>T  | DIMENSIONES CABLE (mm)<br>REF. | A    |      | C  | H  | E  | F  | G     |
|-------|---|--------------------------------|------|------|----|----|----|----|-------|
|       |   |                                | MIN  | MAX  |    |    |    |    |       |
| 1     | ½"NPT-M20x1.5-<br>Pg13.5<br>¾"NPT-<br>M25x1.5pg16 | DNC1.8                         | 5.5  | 8    | 14 | 41 | 32 | 35 | ½"    |
|       |   | DNC1.10                        | 8    | 10.5 |    |    |    |    |       |
|       |   | DNC1.13                        | 10.5 | 13   |    |    |    |    |       |
| 2     | ¾"NPT-M25x1.5-<br>Pg16                            | DNC2.13                        | 10.5 | 13   | 19 | 41 | 36 | 39 | ¾"    |
|       |   | DNC2.15                        | 13   | 15.5 |    |    |    |    |       |
|       |   | DNC2.18                        | 15.5 | 18   |    |    |    |    |       |
| 3     | 1"NPT-M32x1.5-<br>Pg21                            | DNC3.18                        | 15   | 18   | 25 | 52 | 45 | 49 | 1"    |
|       |   | DNC3.21                        | 18   | 21   |    |    |    |    |       |
|       |   | DNC3.24                        | 21   | 24   |    |    |    |    |       |
| 4     | 1"1/4NPT-M40x1.5-<br>Pg29                         | DN4C.24                        | 21   | 24   | 31 | 53 | 50 | 55 | 1"1/4 |
|       |   | DNC4.27                        | 24   | 27   |    |    |    |    |       |
|       |   | DNC4.30                        | 27   | 30   |    |    |    |    |       |
| 5     | 1"1/2-M50x1.5-<br>Pg36                            | DNC5.27                        | 24   | 27   | 37 | 53 | 57 | 62 | 1"1/2 |
|       |   | DNC5.30                        | 27   | 30   |    |    |    |    |       |
|       |   | DNC5.33                        | 30   | 33   |    |    |    |    |       |
|       |   | DNC5.36                        | 33   | 36   |    |    |    |    |       |
| 6     | 2"NPT-M63x1.5-<br>Pg42                            | DNC6.39                        | 36   | 39   | 47 | 53 | 67 | 73 | 2"    |
|       |   | DNC6.42                        | 39   | 42   |    |    |    |    |       |
|       |   | DNC6.45                        | 42   | 45   |    |    |    |    |       |

SERIE DAS

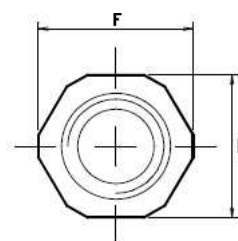
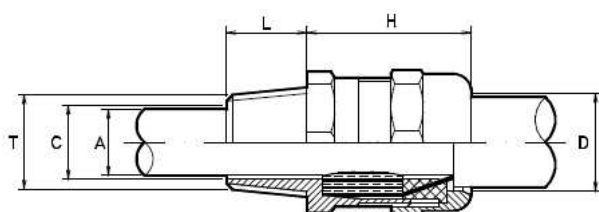
 II 2 GD EEx e/d IIC IP66

**APLICACIÓN**

- **Cable armado**
- Sellado interno bajo armadura y base armada.
- Uso en interiores, sin protección armada.



- 1- CUERPO
- 2- SELLADO
- 3- ANILLOS PARA SUJETAR ARMADURA
- 4- TUERCA



Designación : **DAS1.10 M20x1.5**

| ROSCA |   | DIMENSIONES CABLE (mm) |      | DIMENSIONES PRENSAESTOPAS (mm) |    |    |    |    |    |
|-------|---|------------------------|------|--------------------------------|----|----|----|----|----|
| Grupo | T   | REF.                   | A    |                                | C  | D  | H  | E  | F  |
|       |   |                        | MIN  | MAX                            |    |    |    |    |    |
| 0     | 3/8"NPT-M16x1.5-Pg9/11                        | DAS0.7                 | 4    | 7                              | 11 | 16 | 33 | 24 | 26 |
|       | 1/2"NPT-M20x1.5-Pg13.5                        | DAS0.10                | 7    | 10                             |    |    |    |    |    |
| 1     | 1/2"NPT-M20x1.5-Pg13.5<br>3/4"NPT-M25x1.5pg16 | DAS1.8                 | 5.5  | 8                              | 14 | 20 | 41 | 32 | 35 |
|       |   | DAS1.10                | 8    | 10.5                           |    |    |    |    |    |
|       |   | DAS1.13                | 10.5 | 13                             |    |    |    |    |    |
| 2     | 3/4"NPT-M25x1.5-Pg16                          | DAS2.13                | 10.5 | 13                             | 19 | 25 | 41 | 36 | 39 |
|       |   | DAS2.15                | 13   | 15.5                           |    |    |    |    |    |
|       |   | DAS2.18                | 15.5 | 18                             |    |    |    |    |    |
| 3     | 1"NPT-M32x1.5-Pg21                            | DAS3.18                | 15   | 18                             | 25 | 32 | 52 | 45 | 49 |
|       |   | DAS3.21                | 18   | 21                             |    |    |    |    |    |
|       |   | DAS3.24                | 21   | 24                             |    |    |    |    |    |
| 4     | 1"1/4NPT-M40x1.5-Pg29                         | DAS4.24                | 21   | 24                             | 31 | 38 | 53 | 50 | 55 |
|       |   | DAS4.27                | 24   | 27                             |    |    |    |    |    |
|       |   | DAS4.30                | 27   | 30                             |    |    |    |    |    |
| 5     | 1"1/2-M50x1.5-Pg36                            | DAS5.27                | 24   | 27                             | 37 | 44 | 53 | 57 | 62 |
|       |   | DAS5.30                | 27   | 30                             |    |    |    |    |    |
|       |   | DAS5.33                | 30   | 33                             |    |    |    |    |    |
|       |   | DAS5.36                | 33   | 36                             |    |    |    |    |    |
| 6     | 2"NPT-M63x1.5-Pg42                            | DAS6.39                | 36   | 39                             | 47 | 54 | 53 | 67 | 73 |
|       |   | DAS6.42                | 39   | 42                             |    |    |    |    |    |
|       |   | DAS6.45                | 42   | 45                             |    |    |    |    |    |
| 7     | 2"1/2NPT-M75x1.5-Pg48                         | DAS7.48                | 45   | 48                             | 57 | 65 | 53 | 80 | 88 |
|       |   | DAS7.51                | 48   | 51                             |    |    |    |    |    |
|       |   | DAS7.54                | 51   | 54                             |    |    |    |    |    |

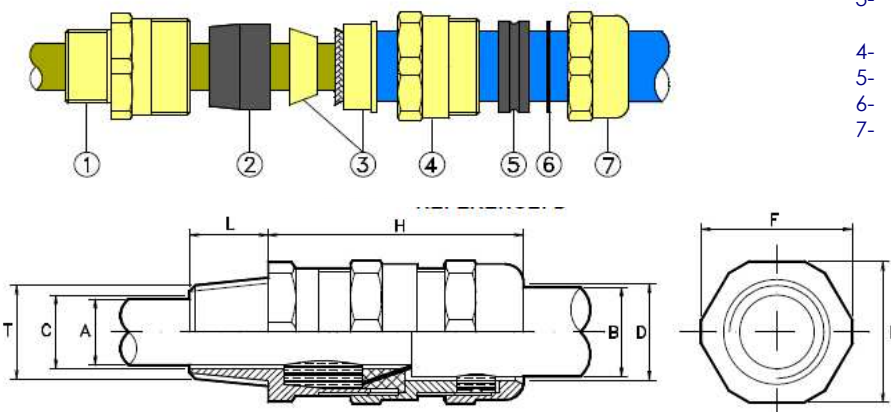
SERIE DAD

**Ex II 2 GD EEx e/d IIC IP66**

**APLICACIÓN**

- **Cable armado**
- Sellado interno y externo, base armada.
- Uso en exteriores con protección completa de cable armado.

- 1- CUERPO
- 2- SELLADO INTERNO
- 3- ANILLOS PARA SUJETAR ARMADURA
- 4- CUERPO MEDIO
- 5- SELLADO EXTERNO
- 6- ARANDELA
- 7- TUERCA



Designación : **DAD1.1015 M20x1.5**

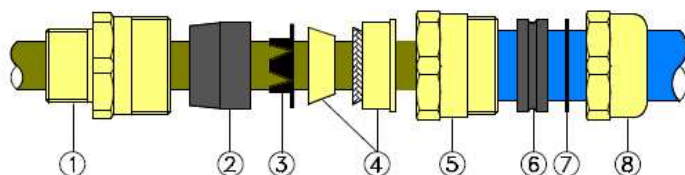
| ROSCA |   | DIMENSIONES CABLE (mm) |      |      |     |     | DIMENSIONES PRENSAESTOPAS (mm) |    |    |    |    |
|-------|---|------------------------|------|------|-----|-----|--------------------------------|----|----|----|----|
| Grupo | T   | REF.                   | A    |      | B   |     | C                              | D  | H  | E  | F  |
|       |   |                        | MIN  | MAX  | MIN | MAX |                                |    |    |    |    |
| 0     | 3/8"NPT-M16x1.5-Pg9/11                        | DAD0.7                 | 4    | 7    | 10  | 15  | 11                             | 16 | 53 | 24 | 26 |
|       | 1/2"NPT-M20x1.5-Pg13.5                        | DAD0.10                | 7    | 10   | 10  | 15  |                                |    |    |    |    |
| 1     | 1/2"NPT-M20x1.5-Pg13.5<br>3/4"NPT-M25x1.5pg16 | DAD1.8*                | 5.5  | 8    | 10  | 15  | 11                             | 20 | 65 | 32 | 35 |
|       |   | DAD1.10*               | 8    | 10.5 | 14  | 19  |                                |    |    |    |    |
|       |   | DAD1.13*               | 10.5 | 13   | 14  | 19  |                                |    |    |    |    |
| 2     | 3/4"NPT-M25x1.5-Pg16                          | DAD2.13*               | 10.5 | 13   | 15  | 20  | 14                             | 25 | 65 | 36 | 39 |
|       |   | DAD2.15*               | 13   | 15.5 | 19  | 24  |                                |    |    |    |    |
|       |   | DAD2.18*               | 15.5 | 18   | 19  | 24  |                                |    |    |    |    |
| 3     | 1"NPT-M32x1.5-Pg21                            | DAD3.18*               | 15   | 18   | 20  | 26  | 25                             | 32 | 82 | 45 | 49 |
|       |   | DAD3.21*               | 18   | 21   | 25  | 31  |                                |    |    |    |    |
|       |   | DAD3.24*               | 21   | 24   | 25  | 31  |                                |    |    |    |    |
| 4     | 1"1/4NPT-M40x1.5-Pg29                         | DAD4.24*               | 21   | 24   | 26  | 32  | 31                             | 38 | 83 | 50 | 55 |
|       |   | DAD4.27*               | 24   | 27   | 31  | 37  |                                |    |    |    |    |
|       |   | DAD4.30*               | 27   | 30   | 31  | 37  |                                |    |    |    |    |
| 5     | 1"1/2-M50x1.5-Pg36                            | DAD5.27*               | 24   | 27   | 31  | 37  | 37                             | 44 | 83 | 57 | 62 |
|       |   | DAD5.30*               | 27   | 30   | 36  | 43  |                                |    |    |    |    |
|       |   | DAD5.33*               | 30   | 33   | 36  | 43  |                                |    |    |    |    |
|       |   | DAD5.36*               | 33   | 36   | 36  | 43  |                                |    |    |    |    |
| 6     | 2"NPT-M63x1.5-Pg42                            | DAD6.39*               | 36   | 39   | 42  | 48  | 47                             | 54 | 83 | 67 | 73 |
|       |   | DAD6.42*               | 39   | 42   | 47  | 53  |                                |    |    |    |    |
|       |   | DAD6.45*               | 42   | 45   | 47  | 53  |                                |    |    |    |    |
| 7     | 2"1/2NPT-M75x1.5-Pg48                         | DAD7.48*               | 45   | 48   | 52  | 58  | 57                             | 65 | 83 | 80 | 88 |
|       |   | DAD7.51*               | 48   | 51   | 58  | 64  |                                |    |    |    |    |
|       |   | DAD7.54*               | 51   | 54   | 58  | 64  |                                |    |    |    |    |

SERIE DALD

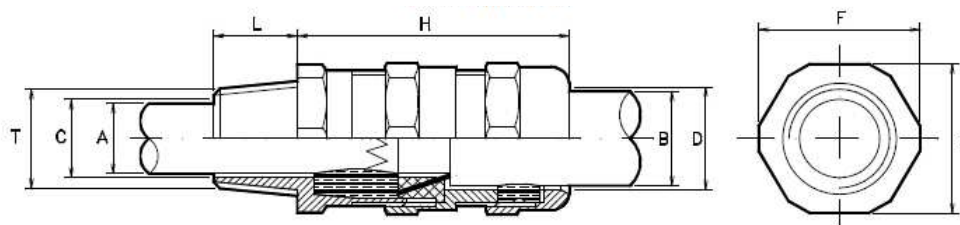
 II 2 GD EEx e/d IIC IP66

**APLICACIÓN**

- **Cable armado y apantallado**
- Sellado interno y externo, armadura y base conductora.
- Uso en exteriores con protección completa de cable armado.



- 1- CUERPO
- 2- SELLADO INTERNO
- 3- ANILLO CONDUCTOR
- 4- ANILLO PARA SUJETAR ARMADURA
- 5- CUERPO MEDIO
- 6- SELLADO EXTERNO
- 7- ARANDELA
- 8- TUERCA



Designación : **DALD1.1015 M20x1.5**

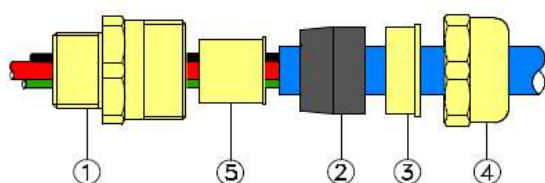
| Grupo | T   | REF.      | DIMENSIONES CABLE (mm) |      |     |     | DIMENSIONES PRENSAESTOPAS (mm) |    |    |    |    |
|-------|---|-----------|------------------------|------|-----|-----|--------------------------------|----|----|----|----|
|       |   |           | A                      |      | B   |     | C                              | D  | H  | E  | F  |
|       |   |           | MIN                    | MAX  | MIN | MAX |                                |    |    |    |    |
| 1     | ½"NPT-M20x1.5-<br>Pg13.5<br>¾"NPT-<br>M25x1.5pg16 | DALD1.8*  | 4.5                    | 6    | 10  | 15  | 14                             | 20 | 41 | 32 | 35 |
|       |   | DALD1.10* | 6                      | 8.5  | 14  | 19  |                                |    |    |    |    |
|       |   | DALD1.13* | 8.5                    | 11   |     |     |                                |    |    |    |    |
| 2     | ¾"NPT-M25x1.5-<br>Pg16                            | DALD2.13* | 8.5                    | 11   | 15  | 20  | 19                             | 25 | 41 | 36 | 39 |
|       |   | DALD2.15* | 11                     | 13.5 | 19  | 24  |                                |    |    |    |    |
|       |   | DALD2.18* | 13.5                   | 16   |     |     |                                |    |    |    |    |
| 3     | 1"NPT-M32x1.5-<br>Pg21                            | DALD3.18* | 13                     | 16   | 20  | 26  | 25                             | 32 | 52 | 45 | 49 |
|       |   | DALD3.21* | 16                     | 19   | 25  | 31  |                                |    |    |    |    |
|       |   | DALD3.24* | 19                     | 22   |     |     |                                |    |    |    |    |
| 4     | 1"1/4NPT-<br>M40x1.5-Pg29                         | DALD4.24* | 19                     | 22   | 26  | 32  | 31                             | 38 | 53 | 50 | 55 |
|       |   | DALD4.27* | 22                     | 25   | 31  | 37  |                                |    |    |    |    |
|       |   | DALD4.30* | 25                     | 28   |     |     |                                |    |    |    |    |
| 5     | 1"1/2-M50x1.5-<br>Pg36                            | DALD5.27* | 22                     | 25   | 31  | 37  | 37                             | 44 | 53 | 57 | 62 |
|       |   | DALD5.30* | 25                     | 28   | 36  | 43  |                                |    |    |    |    |
|       |   | DALD5.33* | 28                     | 30   |     |     |                                |    |    |    |    |
|       |   | DALD5.36* | 31                     | 34   |     |     |                                |    |    |    |    |
| 6     | 2"NPT-M63x1.5-<br>Pg42                            | DALD6.39* | 34                     | 37   | 42  | 48  | 47                             | 54 | 53 | 67 | 73 |
|       |   | DALD6.42* | 37                     | 40   | 47  | 53  |                                |    |    |    |    |
|       |   | DALD6.45* | 40                     | 43   |     |     |                                |    |    |    |    |
| 7     | 2"1/2NPT-<br>M75x1.5-Pg48                         | DALD7.48* | 43                     | 46   | 52  | 58  | 57                             | 65 | 53 | 80 | 88 |
|       |   | DALD7.51* | 46                     | 49   | 58  | 64  |                                |    |    |    |    |
|       |   | DALD7.54* | 49                     | 52   |     |     |                                |    |    |    |    |

SERIE DNR

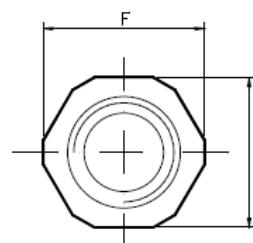
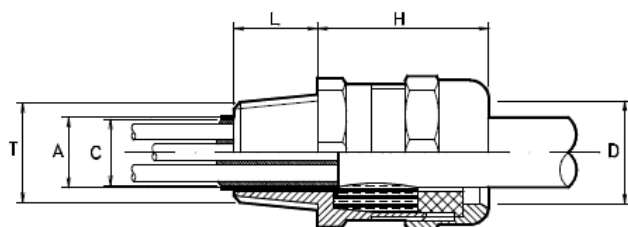
II 2 GD EEx e/d IIC IP66

**APLICACIÓN**

- **Cable no armado**
- Sellado externo
- Válido para envoltentes superiores a 2 litros con equipos que puedan producir chispas (EN 60079-14 para 10.3.2).
- Uso general, interiores y exteriores.



- 1- CUERPO
- 2- SELLADO
- 3- ANILLO PRENSANTE
- 4- TUERCA
- 5- CAMARA SELLANTE



Designación : **DNR1.10 M20x1.5**

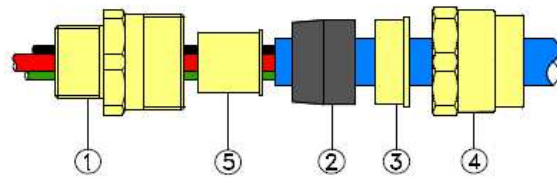
| ROSCA |   | DIMENSIONES CABLE (mm) |      | DIMENSIONES PRENSAESTOPAS (mm) |    |    |    |    |    |
|-------|---|------------------------|------|--------------------------------|----|----|----|----|----|
| Grupo | T   | REF.                   | A    |                                | C  | D  | H  | E  | F  |
|       |   |                        | MIN  | MAX                            |    |    |    |    |    |
| 1     | ½"NPT-M20x1.5-Pg13.5<br>¾"NPT-M25x1.5Pg16 | DNR1.8                 | 5.5  | 8                              | 12 | 20 | 41 | 32 | 35 |
|       |   | DNR1.10                | 8    | 10.5                           |    |    |    |    |    |
|       |   | DNR1.13                | 10.5 | 13                             |    |    |    |    |    |
| 2     | ¾"NPT-M25x1.5-Pg16                        | DNR2.13                | 10.5 | 13                             | 17 | 25 | 41 | 36 | 39 |
|       |   | DNR2.15                | 13   | 15.5                           |    |    |    |    |    |
|       |   | DNR2.18                | 15.5 | 18                             |    |    |    |    |    |
| 3     | 1"NPT-M32x1.5-Pg21                        | DNR3.18                | 15   | 18                             | 23 | 32 | 52 | 45 | 49 |
|       |   | DNR3.21                | 18   | 21                             |    |    |    |    |    |
|       |   | DNR3.24                | 21   | 24                             |    |    |    |    |    |
| 4     | 1"1/4NPT-M40x1.5-Pg29                     | DNR4.24                | 21   | 24                             | 29 | 38 | 53 | 50 | 55 |
|       |   | DNR4.27                | 24   | 27                             |    |    |    |    |    |
|       |   | DNR4.30                | 27   | 30                             |    |    |    |    |    |
| 5     | 1"1/2-M50x1.5-Pg36                        | DNR5.27                | 24   | 27                             | 35 | 44 | 53 | 57 | 62 |
|       |   | DNR5.30                | 27   | 30                             |    |    |    |    |    |
|       |   | DNR5.33                | 30   | 33                             |    |    |    |    |    |
|       |   | DNR5.36                | 33   | 36                             |    |    |    |    |    |
| 6     | 2"NPT-M63x1.5-Pg42                        | DNR6.39                | 36   | 39                             | 45 | 54 | 53 | 67 | 73 |
|       |   | DNR6.42                | 39   | 42                             |    |    |    |    |    |
|       |   | DNR6.45                | 42   | 45                             |    |    |    |    |    |
| 7     | 2"1/2NPT-M75x1.5-Pg48                     | DNR7.48                | 45   | 48                             | 55 | 65 | 53 | 80 | 88 |
|       |   | DNR7.51                | 48   | 51                             |    |    |    |    |    |
|       |   | DNR7.54                | 51   | 54                             |    |    |    |    |    |

SERIE DNCR

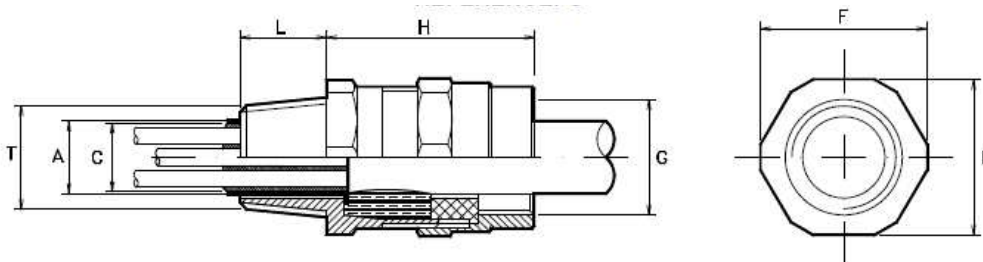
II 2 GD EEx e/d IIC IP66

**APLICACIÓN**

- **Cable no armado**
- Sellado externo
- Válido para acoplar a tubo flexible.
- Válido para envoltentes superiores a 2 litros con equipos que puedan producir chispas (EN 60079-14 para 10.3.2).
- Uso general, interiores y exteriores.
- **NOTA:** Rosca G=ISO 7/1 RP-BSPP. Otras roscas bajo demanda



- 1- CUERPO
- 2- SELLADO
- 3- ANILLO PRENSANTE
- 4- TUERCA
- 5- CAMARA SELLANTE



Designación : **DCNR1.10 M20x1.5**

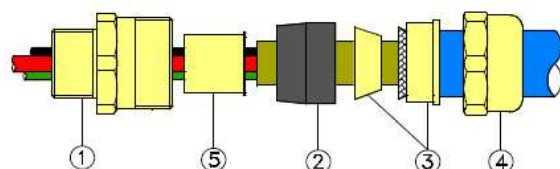
| ROSCA |   | DIMENSIONES CABLE (mm) |      |      | DIMENSIONES PRENSAESTOPAS (mm) |    |    |    |       |
|-------|---|------------------------|------|------|--------------------------------|----|----|----|-------|
| Grupo | T   | REF.                   | A    |      | C                              | H  | E  | F  | G     |
|       |   |                        | MIN  | MAX  |                                |    |    |    |       |
| 1     | ½"NPT-M20x1.5-Pg13.5<br>¾"NPT-M25x1.5Pg16 | DNCR1.8                | 5.5  | 8    | 12                             | 42 | 32 | 35 | ½"    |
|       |   | DNCR1.10               | 8    | 10.5 |                                |    |    |    |       |
|       |   | DNCR1.13               | 10.5 | 13   |                                |    |    |    |       |
| 2     | ¾"NPT-M25x1.5-Pg16                        | DNCR2.13               | 10.5 | 13   | 17                             | 45 | 36 | 39 | ¾"    |
|       |   | DNCR2.15               | 13   | 15.5 |                                |    |    |    |       |
|       |   | DNCR2.18               | 15.5 | 18   |                                |    |    |    |       |
| 3     | 1"NPT-M32x1.5-Pg21                        | DNCR3.18               | 15   | 18   | 23                             | 54 | 45 | 49 | 1"    |
|       |   | DNCR3.21               | 18   | 21   |                                |    |    |    |       |
|       |   | DNCR3.24               | 21   | 24   |                                |    |    |    |       |
| 4     | 1"1/4NPT-M40x1.5-Pg29                     | DNCR4.24               | 21   | 24   | 29                             | 55 | 50 | 55 | 1"1/4 |
|       |   | DNCR4.27               | 24   | 27   |                                |    |    |    |       |
|       |   | DNCR4.30               | 27   | 30   |                                |    |    |    |       |
| 5     | 1"1/2-M50x1.5-Pg36                        | DNCR5.27               | 24   | 27   | 35                             | 55 | 57 | 62 | 1"1/2 |
|       |   | DNCR5.30               | 27   | 30   |                                |    |    |    |       |
|       |   | DNCR5.33               | 30   | 33   |                                |    |    |    |       |
|       |   | DNCR5.36               | 33   | 36   |                                |    |    |    |       |
| 6     | 2"NPT-M63x1.5-Pg42                        | DNCR6.39               | 36   | 39   | 45                             | 55 | 67 | 73 | 2"    |
|       |   | DNCR6.42               | 39   | 42   |                                |    |    |    |       |
|       |   | DNCR6.45               | 42   | 45   |                                |    |    |    |       |

**SERIE DASR**

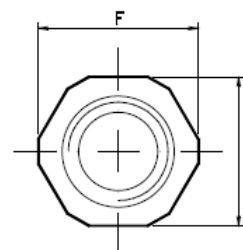
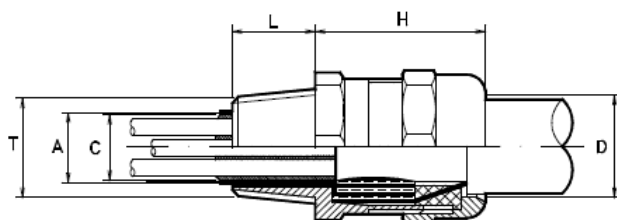
**II 2 GD EEx e/d IIC IP66**

**APLICACIÓN**

- **Cable no armado**
- Sellado interno bajo armadura y base armada
- Válido para envolventes superiores a 2 litros con equipos que puedan producir chispas (EN 60079-14 para 10.3.2).
- Uso en interiores, sin protección armada.



- 1- CUERPO
- 2- SELLADO
- 3- ANILLO PARA SUJETAR ARMADURA
- 4- TUERCA
- 5- CAMARA SELLANTE



Designación : **DASR1.10 M20x1.5**

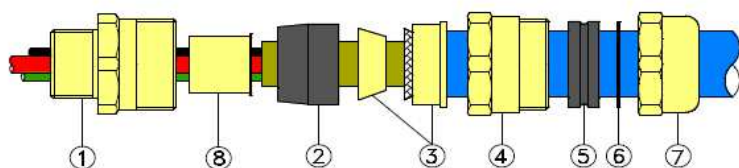
| ROSCA |   | DIMENSIONES CABLE (mm) |      |      | DIMENSIONES PRENSAESTOPAS (mm) |    |    |    |    |
|-------|---|------------------------|------|------|--------------------------------|----|----|----|----|
| Grupo | T   | REF.                   | A    |      | C                              | D  | H  | E  | F  |
|       |   |                        | MIN  | MAX  |                                |    |    |    |    |
| 1     | ½"NPT-M20x1.5-Pg13.5<br>¼"NPT-M25x1.5Pg16 | DASR1.8                | 5.5  | 8    | 12                             | 20 | 41 | 32 | 35 |
|       |   | DASR1.10               | 8    | 10.5 |                                |    |    |    |    |
|       |   | DASR1.13               | 10.5 | 13   |                                |    |    |    |    |
| 2     | ¾"NPT-M25x1.5-Pg16                        | DASR2.13               | 10.5 | 13   | 17                             | 25 | 41 | 36 | 39 |
|       |   | DASR2.15               | 13   | 15.5 |                                |    |    |    |    |
|       |   | DASR2.18               | 15.5 | 18   |                                |    |    |    |    |
| 3     | 1"NPT-M32x1.5-Pg21                        | DASR3.18               | 15   | 18   | 25                             | 32 | 52 | 45 | 49 |
|       |   | DASR3.21               | 18   | 21   |                                |    |    |    |    |
|       |   | DASR3.24               | 21   | 24   |                                |    |    |    |    |
| 4     | 1"1/4NPT-M40x1.5-Pg29                     | DASR4.24               | 21   | 24   | 29                             | 38 | 53 | 50 | 55 |
|       |   | DASR4.27               | 24   | 27   |                                |    |    |    |    |
|       |   | DASR4.30               | 27   | 30   |                                |    |    |    |    |
| 5     | 1"1/2-M50x1.5-Pg36                        | DASR5.27               | 24   | 27   | 35                             | 44 | 53 | 57 | 62 |
|       |   | DASR5.30               | 27   | 30   |                                |    |    |    |    |
|       |   | DASR5.33               | 30   | 33   |                                |    |    |    |    |
| 6     | 2"NPT-M63x1.5-Pg42                        | DASR6.39               | 36   | 39   | 45                             | 54 | 53 | 67 | 73 |
|       |   | DASR6.42               | 39   | 42   |                                |    |    |    |    |
|       |   | DASR6.45               | 42   | 45   |                                |    |    |    |    |
| 7     | 2"1/2NPT-M75x1.5-Pg48                     | DASR7.48               | 45   | 48   | 55                             | 65 | 53 | 80 | 88 |
|       |   | DASR7.51               | 48   | 51   |                                |    |    |    |    |
|       |   | DASR7.54               | 51   | 54   |                                |    |    |    |    |

**SERIE DADR**

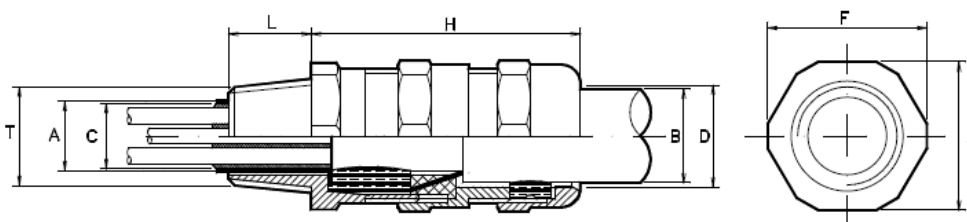
**II 2 GD EEx e/d IIC IP66**

**APLICACIÓN**

- **Cable armado**
- Sellado interno bajo armadura y base armada
- Válido para envoltentes superiores a 2 litros con equipos que puedan producir chispas (EN 60079-14 para 10.3.2).
- Uso en interiores, con protección completa del cable armado.



- 1- CUERPO
- 2- SELLADO INTERNO
- 3- ANILLO PARA SUJETAR ARMADURA
- 4- CUERPO MEDIO
- 5- SELLADO EXTERNO
- 6- ARANDELA
- 7- TUERCA
- 8- CAMARA SELLANTE



Designación : **DADR1.10 M20x1.5**

| Grupo | T   | REF.      | DIMENSIONES CABLE (mm) |      |     |     | DIMENSIONES PRENSAESTOPAS (mm) |    |    |    |    |
|-------|---|-----------|------------------------|------|-----|-----|--------------------------------|----|----|----|----|
|       |   |           | A                      |      | B   |     | C                              | D  | H  | E  | F  |
|       |   |           | MIN                    | MAX  | MIN | MAX |                                |    |    |    |    |
| 1     | ½"NPT-M20x1.5-Pg13.5<br>¾"NPT-M25x1.5Pg16 | DADR1.8*  | 5.5                    | 8    | 10  | 15  | 12                             | 20 | 65 | 32 | 35 |
|       |   | DADR1.10* | 8                      | 10.5 | 14  | 19  |                                |    |    |    |    |
|       |   | DALD1.13* | 10.5                   | 13   |     |     |                                |    |    |    |    |
| 2     | ¾"NPT-M25x1.5-Pg16                        | DADR2.13* | 10.5                   | 13   | 15  | 20  | 17                             | 25 | 65 | 36 | 39 |
|       |   | DADR2.15* | 13                     | 15.5 | 19  | 24  |                                |    |    |    |    |
|       |   | DADR2.18* | 15.5                   | 18   |     |     |                                |    |    |    |    |
| 3     | 1"NPT-M32x1.5-Pg21                        | DADR3.18* | 15                     | 18   | 20  | 26  | 23                             | 32 | 82 | 45 | 49 |
|       |   | DADR3.21* | 18                     | 21   | 25  | 31  |                                |    |    |    |    |
|       |   | DADR3.24* | 21                     | 24   |     |     |                                |    |    |    |    |
| 4     | 1"1/4NPT-M40x1.5-Pg29                     | DADR4.24* | 21                     | 24   | 26  | 32  | 29                             | 38 | 83 | 50 | 55 |
|       |   | DADR4.27* | 24                     | 27   | 31  | 37  |                                |    |    |    |    |
|       |   | DADR4.30* | 27                     | 30   |     |     |                                |    |    |    |    |
| 5     | 1"1/2-M50x1.5-Pg36                        | DADR5.27* | 24                     | 27   | 31  | 37  | 35                             | 44 | 83 | 57 | 62 |
|       |   | DADR5.30* | 27                     | 30   | 36  | 43  |                                |    |    |    |    |
|       |   | DADR5.33* | 30                     | 33   |     |     |                                |    |    |    |    |
| 6     | 2"NPT-M63x1.5-Pg42                        | DADR6.39* | 36                     | 39   | 42  | 48  | 45                             | 54 | 83 | 67 | 73 |
|       |   | DADR6.42* | 39                     | 42   | 47  | 53  |                                |    |    |    |    |
|       |   | DADR6.45* | 42                     | 45   |     |     |                                |    |    |    |    |
| 7     | 2"1/2NPT-M75x1.5-Pg48                     | DADR7.48* | 45                     | 48   | 52  | 58  | 55                             | 65 | 83 | 80 | 88 |
|       |   | DADR7.51* | 48                     | 51   | 58  | 64  |                                |    |    |    |    |
|       |   | DADR7.54* | 51                     | 54   |     |     |                                |    |    |    |    |

 II 2 GD EEx e/d IIC IP66

DENOMINACIÓN DE LAS ROSCAS

|          |                          |
|----------|--------------------------|
| <b>B</b> | BSPP/UNI338 (ISO 7/1 Rp) |
| <b>U</b> | UNI6125 (ISO 7/1 Rc)     |
| <b>N</b> | NPT (ANSI B1 20.1)       |
| <b>I</b> | ISO Mx1,5 (ISO 261)      |
| <b>P</b> | Pg (DIN 40430)           |

| NOMENCLATURA | GRUPO |        |      |      |       |       |      |        |     |
|--------------|-------|--------|------|------|-------|-------|------|--------|-----|
|              | 0     | 1      | 2    | 3    | 4     | 5     | 6    | 7      | 8   |
| <b>U</b>     |       | 1/2"   | 3/4" | 1"   | 1"1/4 | 1"1/2 | 2"   | 2"1/12 | 3"  |
| <b>N</b>     |       | 1/2"   | 3/4" | 1"   | 1"1/4 | 1"1/2 | 2"   | 2"1/12 | 3"  |
| <b>B</b>     | 3/8"  | 1/2"   | 3/4" | 1"   | 1"1/4 | 1"1/2 | 2"   | 2"1/12 | 3"  |
| <b>I</b>     | M16   | M20    | M25  | M32  | M40   | M50   | M63  | M75    | M85 |
| <b>P</b>     | Pg11  | Pg13.5 | Pg16 | Pg21 | Pg29  | Pg36  | Pg42 | Pg48   |     |

 II 2 GD EEx e/d IIC IP66

TAPONES SERIE T

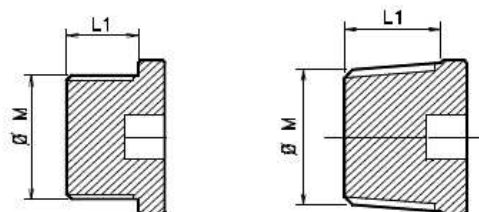
Para todo tipo de roscas, válidos para entradas de envolventes

**Designación:**

**Txa**

T: Tapón  
x: Tipo de rosca (M)  
a: tamaño de rosca (M)

Ej: T10= Tapón M16

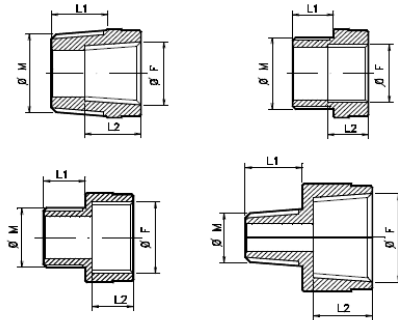


ACCESORIOS

 II 2 GD EEx e/d IIC IP66

**REDUCTORES SERIE R**

Reducciones macho/hembra: Macho y hembra tienen el mismo tipo de rosca.



**Designación:**

**R xa yb**

R: reducción  
x: Tipo de rosca (M)  
a: Tamaño de rosca (M)  
y: Tipo de rosca (F)  
b: Tamaño de rosca (F)

Ej: R 11 I3

 II 2 GD EEx e/d IIC IP66

**REDUCTORES SERIE RM**

Reducciones macho/macho: Ambos machos tienen el mismo tipo de rosca.



**Designación:**

**RM xa yb**

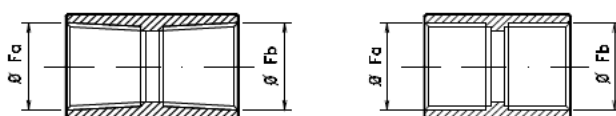
RM: reducción  
x: Tipo de rosca (M)  
a: Tamaño de rosca (M)  
y: Tipo de rosca (M)  
b: Tamaño de rosca (M)

Ej: RM 11 I3

 II 2 GD EEx e/d IIC IP66

**REDUCTORES SERIE RF**

Reducciones hembra/hembra: Ambas hembras tienen el mismo tipo de rosca.



**Designación:**

**RF xa yb**

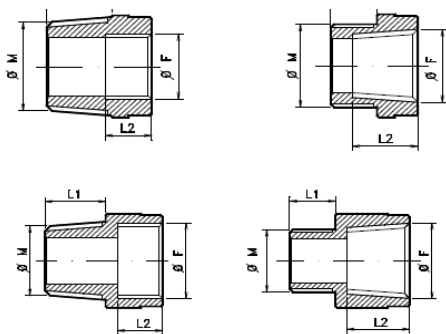
RF: reducción  
x: Tipo de rosca (F)  
a: Tamaño de rosca (F)  
y: Tipo de rosca (F)  
b: Tamaño de rosca (F)

Ej: RF 11 I3

 II 2 GD EEx e/d IIC IP66

**ADAPTADORES SERIE A**

Adaptadores macho/hembra: Macho y hembra tienen distinto tipo de rosca.



**Designación:**

**A xa yb**

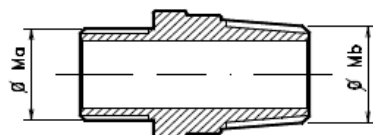
R: Adaptador  
x: Tipo de rosca (M)  
a: Tamaño de rosca (M)  
y: Tipo de rosca (F)  
b: Tamaño de rosca (F)

Ej: A I1 N1

 II 2 GD EEx e/d IIC IP66

**ADAPTADORES SERIE AM**

Adaptadores macho/macho.



**Designación:**

**AM xa yb**

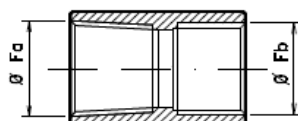
AM: Adaptador  
x: Tipo de rosca (M)  
a: Tamaño de rosca (M)  
y: Tipo de rosca (M)  
b: Tamaño de rosca (M)

Ej: AM I1 N1

 II 2 GD EEx e/d IIC IP66

**ADAPTADORES SERIE AF**

Adaptadores hembra/hembra



**Designación:**

**AF xa yb**

AF: Adaptador  
x: Tipo de rosca (F)  
a: Tamaño de rosca (F)  
y: Tipo de rosca (F)  
b: Tamaño de rosca (F)

Ej: AM I1 N1

ACCESORIOS

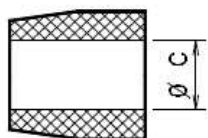
 II 2 GD EEx e/d IIC IP66

OTROS ACCESORIOS

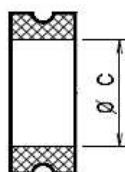
---

Gomas de sellado

Sellado interno



Sellado externo



**Materiales:**

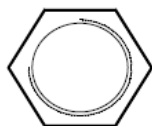
- EPDM
- Silicona

Cubiertas



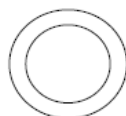
Serie PTD

Contratuercas



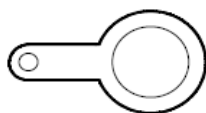
Serie LB (BSPP/UNI 338)  
Serie LI (ISO Mx1.5)  
Serie LP (Pg)

Juntas



Serie GB (BSPP/UNI 338)  
Serie GI (ISO Mx1.5)  
Serie GP (Pg)

Anilla de puesta a tierra

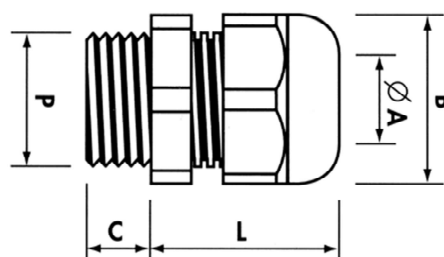


Serie ETB (BSPP/UNI 338)  
Serie ETI (ISO Mx1.5)  
Serie ETP (Pg)

 II 2 GD EEx e/i II IP65/7

**CARACTERÍSTICAS**

- Material: poliamida
- Color: Negro (Eex e), azul (Eex i)
- Certificado CESI 03 ATEX 305X (Eex e) y LOM 01 ATEX 2038X (Eex i)
- Temperatura ambiente -25°C +90°C
- Cable no armado



| Eex e<br>Color negro | Eex i<br>Color azul | P   | Orificio<br>(mm) | A diam.<br>(mm) | B<br>(mm) | C (mm) | L<br>min-max<br>(mm) |
|----------------------|---------------------|-----|------------------|-----------------|-----------|--------|----------------------|
| UNI02XE              | UNI02XI             | M12 | 12,5             | 4-6,5           | 15        | 8      | 22-26                |
| UNI01XE              | UNI01XI             | M16 | 16,5             | 6-10            | 22        | 8      | 27-32                |
| UNI1XE               | UNI1XI              | M20 | 20,5             | 8-14            | 24        | 8      | 34-39                |
| UNI2XE               | UNI2XI              | M25 | 25,5             | 13-18           | 33        | 11     | 36-42                |
| UNI3XE               | UNI3XI              | M32 | 32,5             | 18-25           | 42        | 11     | 41-47                |
| UNI4XE               | UNI4XI              | M40 | 40,5             | 22-32           | 53        | 13     | 51-58                |
| UNI5XE               | UNI5XI              | M50 | 50,5             | 30-38           | 60        | 13     | 52-60                |
| UNI6XE               | UNI6XI              | M63 | 63,5             | 34-44           | 65        | 13     | 52-60                |



**SICCIS S.A.**

Avda. metalurgia 15

33211 – Gijón

Asturias

Tel. 985325100 Fax. 985322252

[www.gruposiccis.com](http://www.gruposiccis.com)

[info@gruposiccis.com](mailto:info@gruposiccis.com)